

# AVALON AIRPORT

## CHANGES TO APPROACH PROCEDURES

Airservices will implement proprietary changes for Jetstar aircraft arriving to Avalon Airport from 30 January 2020.

### Background

Airservices will implement proprietary changes for Jetstar aircraft arriving to Avalon Airport from 30 January 2020. These changes will mean some aircraft arriving to Runway 36 at Avalon Airport fly on different tracks.

These changes will improve safety by using modern satellite based navigation technology, will reduce aircraft emissions by an estimated 95kg CO<sub>2</sub> emissions per flight (or 38.2 tonnes of CO<sub>2</sub> per year) and will provide a noise improvement to communities on the southern side of Port Phillip Bay.

There will be no change in the overall number of aircraft movements or aircraft types at Avalon Airport as a result of these changes and these changes are not expected to change the operation of other airlines at Avalon Airport.

### What will change at Avalon Airport?

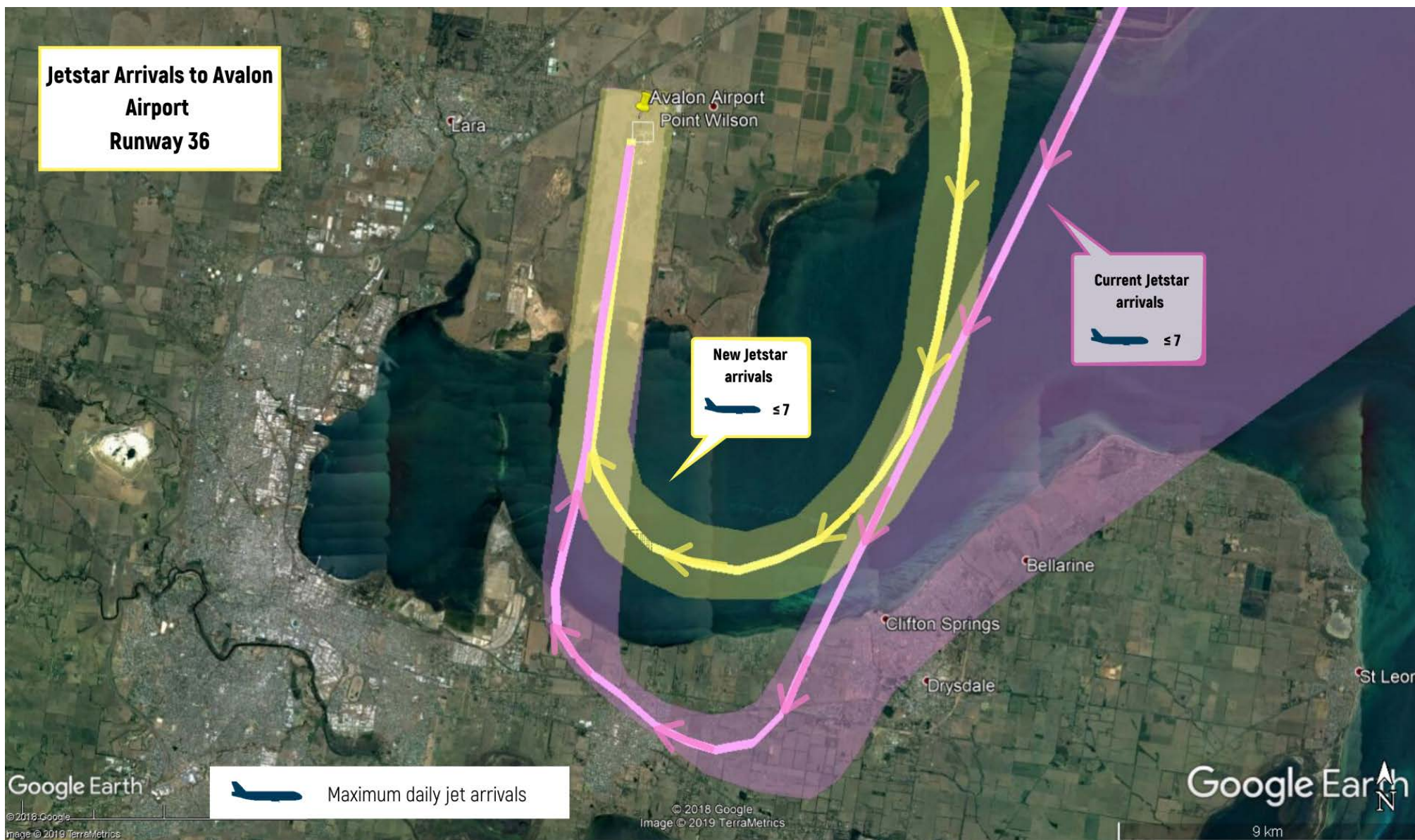
Residents of **Leopold, Wallington, Clifton Springs, Curlewis, Drysdale** and **Moolap** will benefit from a reduction in the number of jets overflying their communities. Residents may notice some aircraft flying approximately 4.3km further away from their communities, over Port Phillip Bay. This is likely to result in reduced aircraft noise. Residents can expect to see an average of 1 (maximum of 7) Jetstar arrivals per day and 2 Jetstar arrivals per week at night using this new flight track (**Figure 1**).

The number of aircraft operating on different flight tracks north of Avalon Airport may vary depending on how the new arrival procedure is used by Air Traffic Controllers and pilots. However, based on anticipated usage:

- Residents of **Little River** and some parts of **Mambourin** may notice some aircraft flying in a different orientation (from north-east to north-west). Residents can expect to see an average of 3 Jetstar aircraft per week (maximum of 1 per day) operating on this arrival path (**Figure 2**).
- Residents of **Wyndham Vale** and some parts of **Mambourin** and may notice an increase of Jetstar aircraft on existing tracks. Currently an average of 1 Jetstar aircraft per day (maximum of 4) operate on this arrival path. Residents can expect to see an average of 2 Jetstar aircraft per day (maximum of 6) operating on this arrival path (**Figure 2**). There will be no change to noise impacts.

Although this is a proprietary procedure for use by Jetstar, other authorised airline operators may elect to use it, which could vary the numbers provided above.

*Note: Flight numbers above have been rounded to the nearest whole number.*



**Figure 1:** Approach to Runway 36 - existing approach procedures (pink) and new approach procedures (yellow).

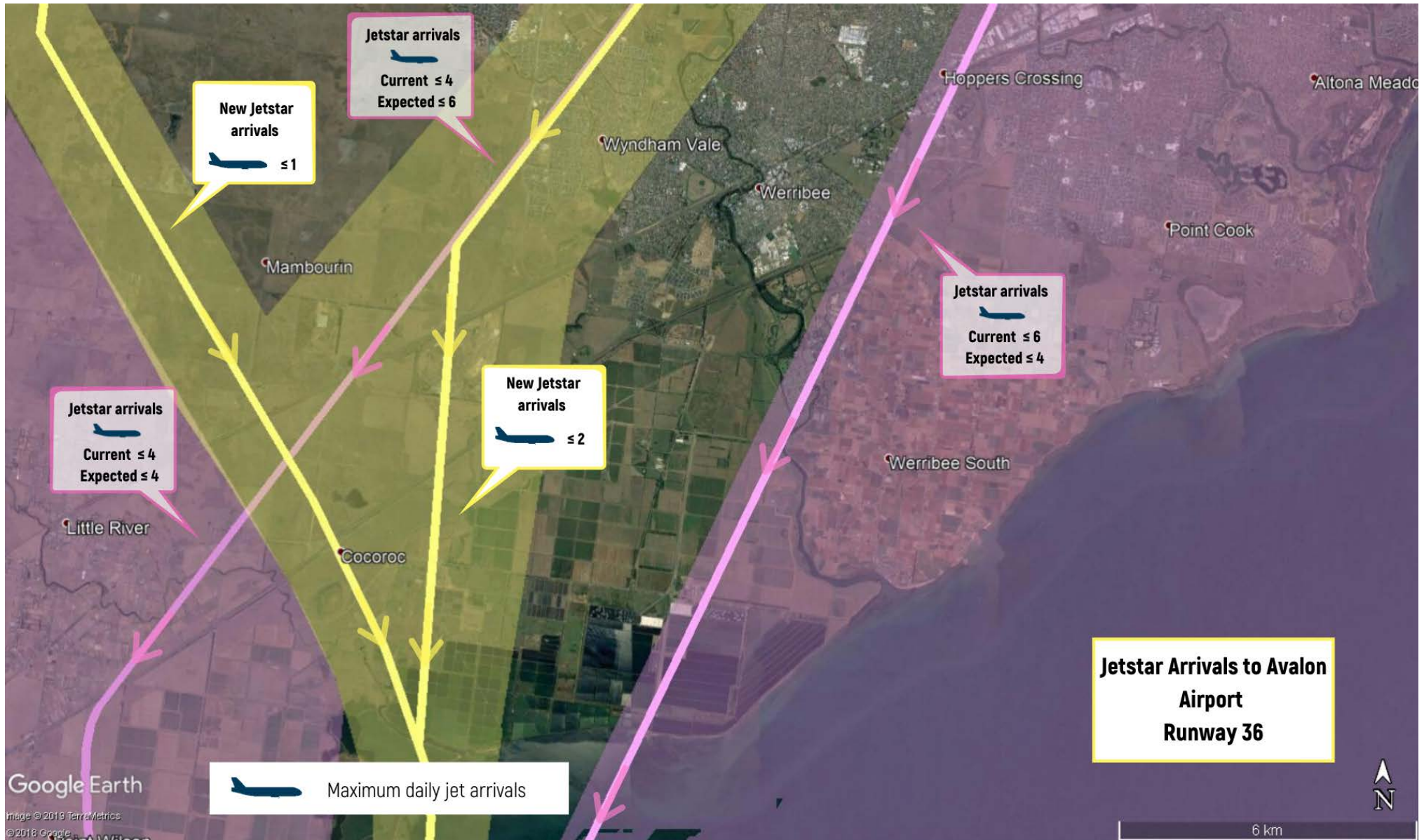


Figure 2: Approach to Runway 36 - existing approach procedures (pink) and new approach procedures (yellow).

## Have a question?

For questions about this change and / or current aircraft operations contact our Noise Complaints and Information Service (NCIS) on:

- <http://www.airservicesaustralia.com/aircraftnoise/about-making-a-complaint/>
- 1800 802 584 (free call)
- 131 450 (interpreter service) 