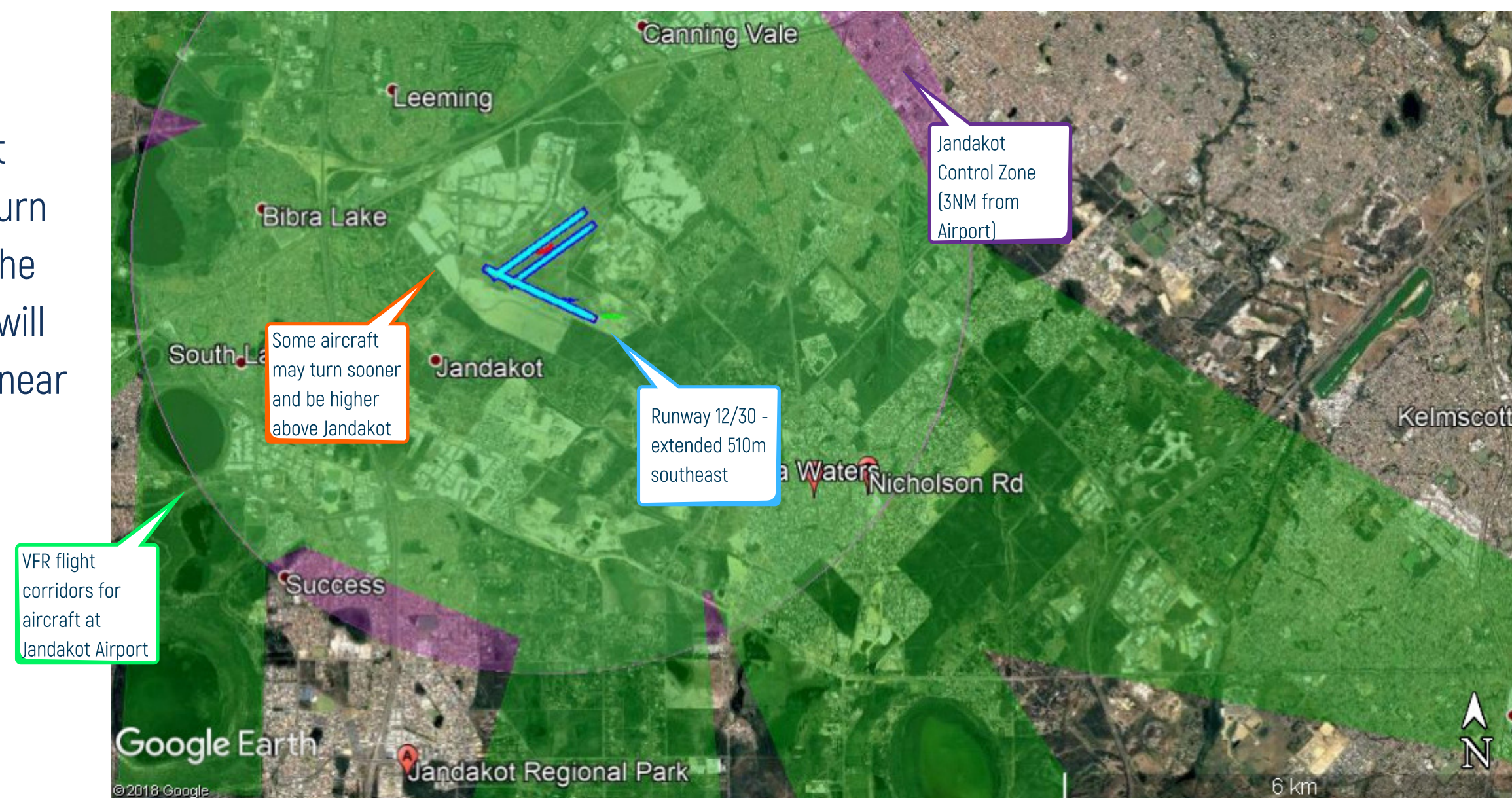


WHAT WILL CHANGE WHEN RUNWAY 30 IS USED FOR DEPARTURES?

Instrument Flight Rule (IFR) aircraft departing from Runway 30 may turn up to 510 metres earlier due to the runway extension. These aircraft may fly in the orange areas and will be at slightly higher altitudes.

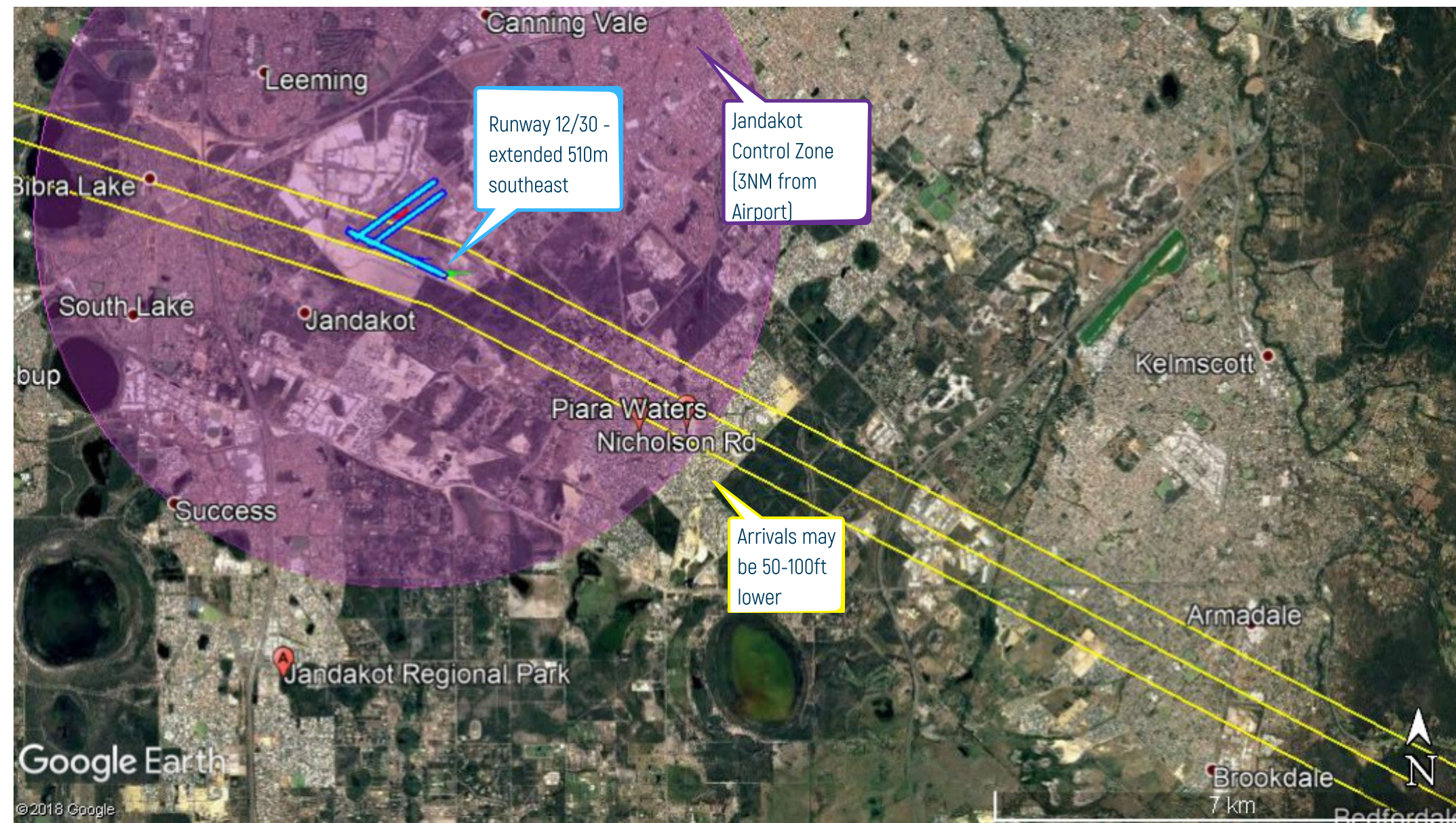


Visual Flight Rule (VFR) aircraft departing from Runway 30 may turn up to 510 metres earlier due to the runway extension. These aircraft will be at slightly higher altitudes near Jandakot.

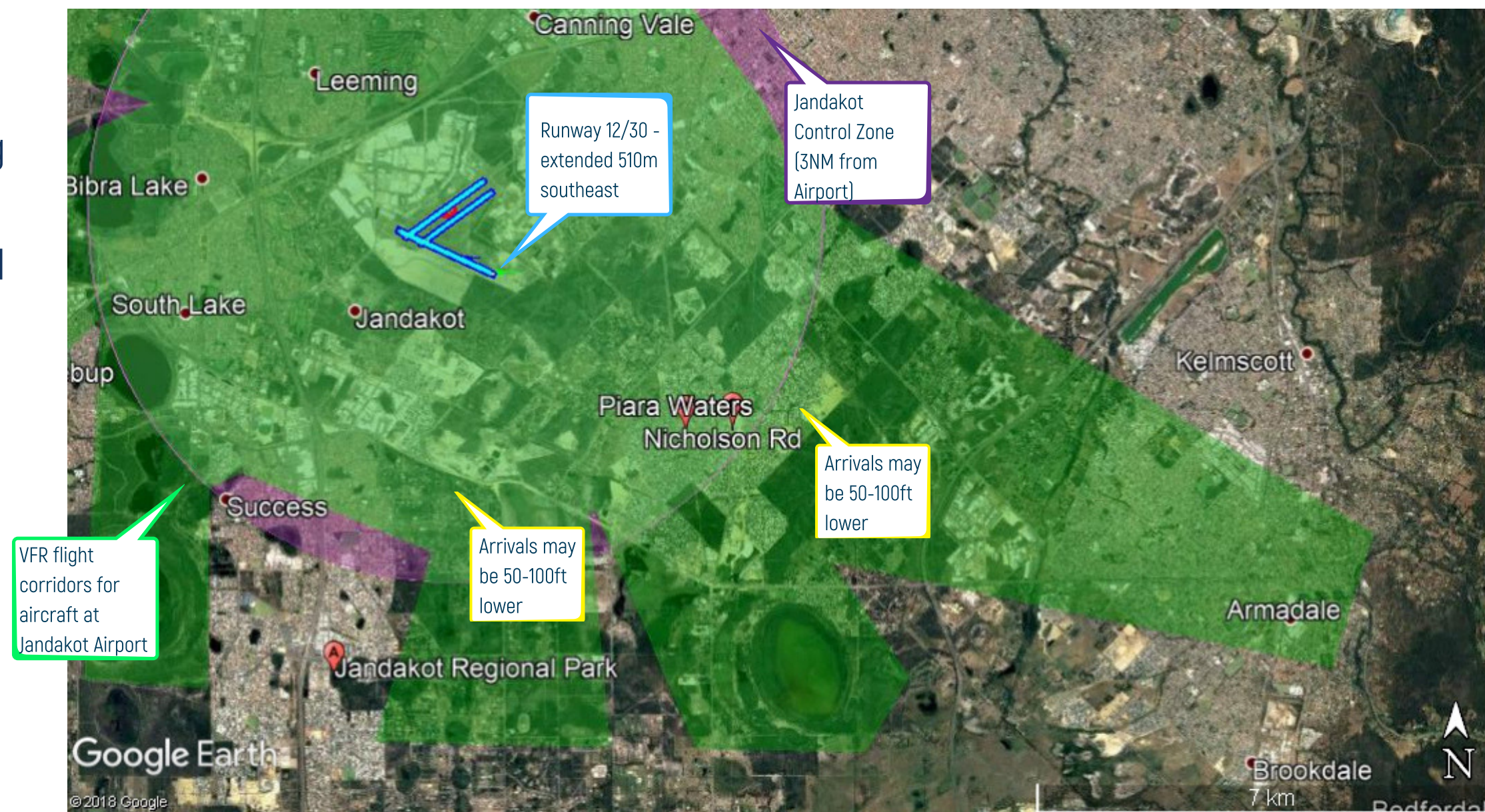


WHAT WILL CHANGE WHEN RUNWAY 30 IS USED FOR ARRIVALS?

Instrument Flight Rule (IFR) aircraft arriving to Runway 30 may be 50-100ft lower on approach due to the runway extension.
These aircraft will fly on the same yellow flight path (no change in distance).



Visual Flight Rule (VFR) aircraft arriving to Runway 30 may be 50-100ft lower between the Airport, Jandakot Regional Park and Piara Waters due to the runway extension.



All figures are approximate
NM = Nautical Miles
m = Metres
ft = Feet