

# MELBOURNE AIRPORT RUNWAY MODE AND FLIGHT PATH CHANGES

Airservices is proposing changes to how some runways (Runway 09 and Runway 16) are used for arrivals to Melbourne Airport, when certain wind conditions exist.

This is an Airservices initiated change to improve safety and efficiency at Melbourne Airport and is not part of the Melbourne Airport Runway Development Program.

## WHY ARE THE CHANGES NECCESARY?

Flights land and take off from different runways depending on wind, weather, operational requirements, emergencies and noise management.

Currently at Melbourne Airport, during periods of south/south easterly winds, the north-south runway (Runway 16) is used for both arrivals and departures. This is an example of what is called a runway 'mode'. Runway modes are described in the Noise Abatement Procedures (NAPs) for Melbourne Airport.

During busy periods at Melbourne Airport, this existing runway mode may result in delays to flights on the ground and in the air, which can have flow-on impacts across the whole air traffic network.

Airservices is proposing to add a new runway mode to the NAPs to be used when there are south/south easterly winds.

The proposed new runway mode will reduce delays to aircraft and passengers, and reduce the workload for air traffic controllers and pilots, particularly when there is holding in the air for arriving traffic into Melbourne. The proposed changes will improve safety and efficiency of operations at Melbourne Airport.

## WHAT IS GOING TO CHANGE?

The new runway mode will mean that **generally**:

- Arriving domestic aircraft will now land on the east-west runway (Runway 09)
- Arriving international aircraft will mostly continue to land on the north-south runway (Runway 16, as this is the longer runway), however in some cases could land on Runway 09.
- All departing aircraft (domestic and international) will continue to use Runway 16.

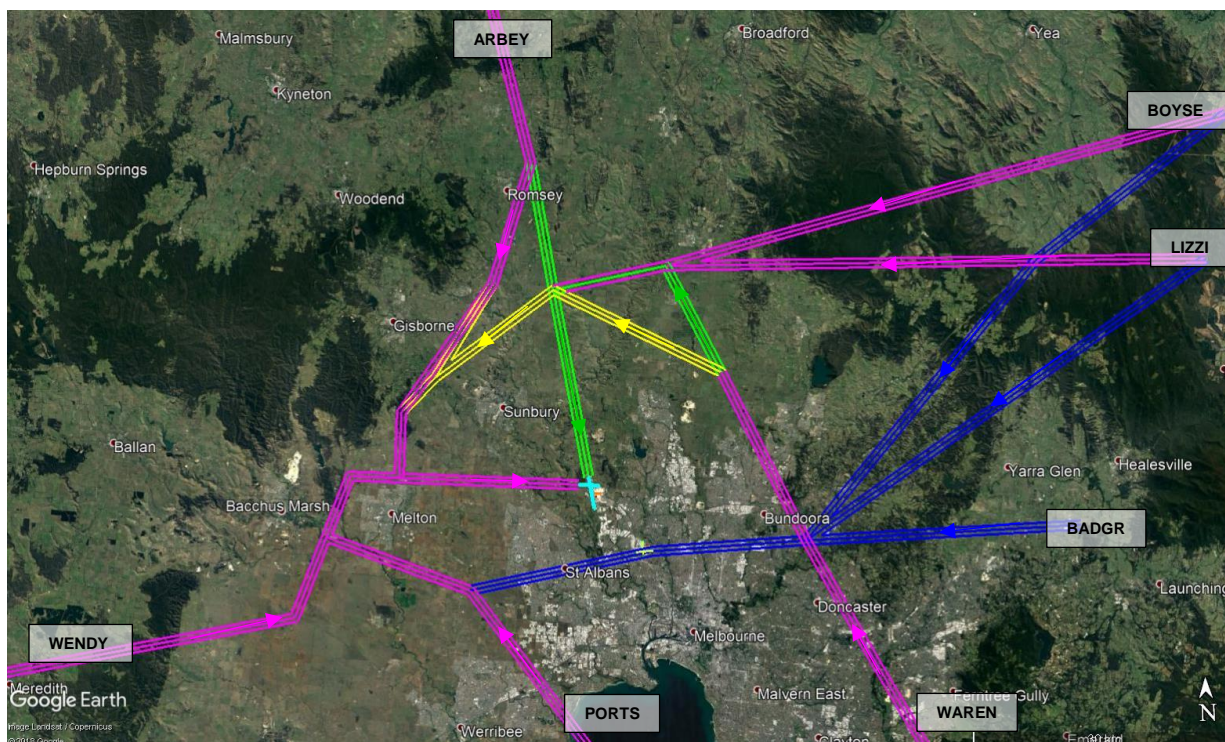
*On some occasions domestic aircraft may land on Runway 16 and smaller international aircraft may land on Runway 09, in this mode.*

The new runway mode will assist to minimise delays in the air and on the ground, especially during peak periods.

In order for aircraft to land safely and efficiently on Runway 09, some arrival flight paths to the north and northwest of Melbourne Airport will also need to change. This will ensure that arriving aircraft remain separated from departing aircraft and can approach the airport in a safe and efficient manner. These arrival flight paths are known as Standard Instrument Arrivals (STARs) and each STAR has a name. Changes to the STARs have been designed to be as close to existing flight paths as possible.

Existing runway modes and flight paths will continue to be used at Melbourne Airport, in other wind conditions.

The proposed new runway mode, with Runway 09 for arrivals, will not be used between 11:00pm-6:00am. However Runway 09 may be used during these times when it is the only suitable runway for operational reasons.



**Figure 1: Arrival flight path corridors for Runway 09 (for use when there are south and south-easterly winds)**

Key: ● Current Arrival Paths (Runway 09) ● Current Arrival Paths (Runway 16)  
● Proposed Additional Arrival Paths (Runway 09) ● Removed Arrival Paths (mode dependent)  
+ Melbourne Airport Runways   Name of Arrival Path

## HOW WILL IT BE DIFFERENT FROM WHAT I EXPERIENCE TODAY?

Three community specific fact sheets for communities located west, north-west and north of Melbourne Airport, who may be affected by the proposed change, are available on the [Airservices website](https://www.airservices.com.au). These fact sheets contain detailed information about what communities may see and hear as a result of the proposed changes.

## WHEN WILL THIS CHANGE OCCUR?

Implementation of this change is planned for May 2019.

## WHERE CAN I GET MORE INFORMATION?

Airservices will be hosting 'drop in' consultation sessions with potentially affected communities between 7 and 9 March 2019. Details of these sessions are available on the [Airservices website](#). A general fact sheet about the changes is also available on the website.

## HOW CAN I HAVE MY SAY?

Feedback can be provided:

- In person at one of our consultation sessions
- Via online form at: <https://feedback.emsbk.com/asa>
- Mail to: Feedback c/o Noise Complaints and Information Service, PO BOX 211 Mascot NSW 1460

For general information on flight path changes, contact the Noise Complaints and Information Service (NCIS) on:

- 1800 802 584 (free call)
- 131 450 (interpreter service)



Consultation commenced on 15 January 2019 and feedback closes on **12 March 2019**.

1. dB(A): Decibels adjusted to reflect the ear's response to different frequencies of sound.