

TOWNSVILLE AIRPORT

TRAFFIC MANAGEMENT PLAN – FINAL STAGE

Runway 01 RNAV approaches

Airservices and the Department of Defence are implementing changes to improve the safety and efficiency of aircraft operations for arriving and departing flights at Townsville Airport.

These changes will ensure aircraft flying in and out of Townsville airport are on more predictable and segregated flight paths that can be better managed by aircraft flight management systems, and reducing pilot and air traffic control workload.

Since May 2017 this has included high level flight path changes, changes to traffic management procedures and realigning the satellite-based area navigation approach (RNAV) to Runway 19, for aircraft landing at the airport when approaching from the north.

WHAT IS THE CHANGE?

The satellite-based area navigation approach to Runway 01, for aircraft landing at the airport when approaching from the south, is now going to be updated to utilise the latest navigation technology.

WHY IS THE CHANGE NEEDED?

The change to the satellite-based area navigation approach will include vertical guidance for pilots. This vertical guidance provides overall safety improvements, with protection from terrain, particularly in poor weather conditions with limited visibility.

WHAT IS GOING TO CHANGE?

Updating the flight path design requires movement of the location at which the pilot commences the approach in line with the runway. This will ensure that the aircraft can lock on to the vertical profile of the approach at the required distance from the runway that is specified in the design rules.

Therefore existing aircraft tracking will move and the change in tracking is expected to be approximately 1 km south of the current position.

WILL THERE BE ANY CHANGE IN AIRCRAFT NOISE OR TRACKING?

There will be no increase in the total numbers of flights in and out of Townsville.

Runway 01 is used for the majority of arrivals into Townsville. However the RNAV approach for Runway 01 is not often used, with a high proportion of arriving aircraft using other types of approaches.

The RNAV approach flight path is expected to be used by less than 10 aircraft per day.

Noise levels on the on the existing tracking will be similar to those currently experienced.

Residents in the rural area south of **Pinnacles** will notice a change of tracking for some arriving jet aircraft, with noise levels expected to be above 60dB(A).

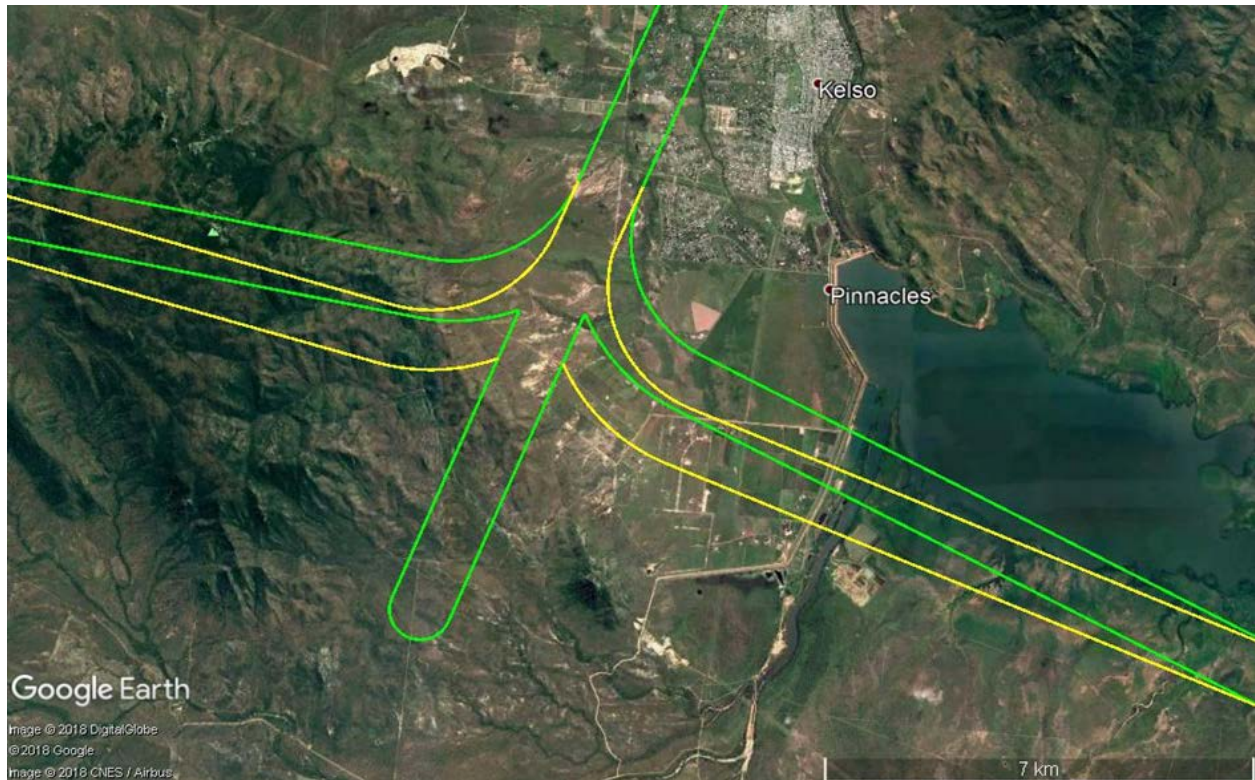


Figure 1: Indicative flight path corridor for the new area navigation instrument approach from the south from November 2018 (yellow) and existing flight path corridor (green)

WHEN WILL THE CHANGE OCCUR?

The change to aircraft tracking from the south to Runway 01 will be implemented on 8 November 2018.

Additional flight path changes are proposed for May 2019. Information on these changes will be provided on Airservices website with the opportunity to provide feedback.

WHERE CAN I PROVIDE FEEDBACK OR GET MORE INFORMATION ON THE CHANGES?

Residents can contact Airservices Noise Complaints and Information Service:

- 1800 802 584 (free call)
- 131 450 (interpreter service)
- online at:

<https://complaints.bksv.com/asa>

Feedback on the proposed changes closes on 30 October 2018.